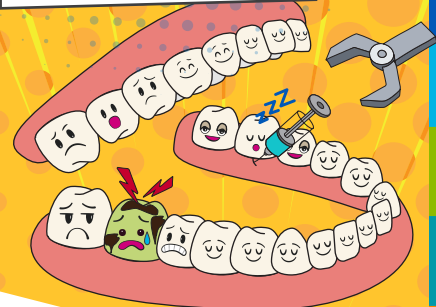


CHASE BREXTON GETS
ORGAN-IZED FOR
THE JOINT COMMISSION

RIGHT PATIENT...
RIGHT PROCEDURE...BUT...



NO!

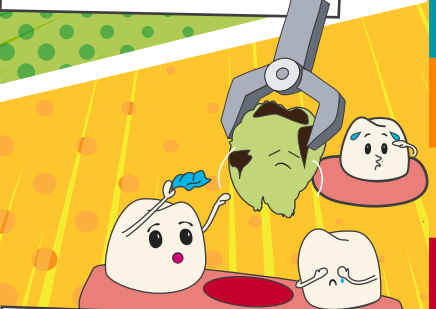
...WRONG SITE??

MEANWHILE...UNIVERSAL PROTOCOL
WOULD MAKE SURE THE TEAM PERFORMED
THE CORRECT PROCEDURE ON THE
CORRECT PERSON AT THE CORRECT SITE.

TIME OUT!



WHEW! THE TEAM STOPPED
FOR A LAST MINUTE CHECK...



& VERIFIED THE CORRECT
PROCEDURE ON THE CORRECT
PERSON AT THE CORRECT SITE!

*THE TEETH IN THIS COMIC WERE ACTORS: NO TEETH
WERE INJURED DURING THE MAKING OF THIS COMIC.

The Joint Commission Ambulatory Health Care National Patient Safety Goals

PREVENTING WRONG SITE, WRONG PROCEDURE

HOW

Organizations can enhance safety by correctly identifying the patient, the appropriate procedure, and the correct site of the procedure.

The Universal Protocol applies to all surgical and nonsurgical invasive procedures.

TIME OUT FOR FOUR

1

CORRECT PATIENT

2

CORRECT PROCEDURE

3

CORRECT SIDE & SITE

4

AGREEMENT THAT
WE ARE SET TO GO

THIS IS AN INTRODUCTION TO UNIVERSAL PROTOCOL FOR
PREVENTING WRONG SITE, WRONG PROCEDURE.
FOR INTERNAL USE ONLY - STAFF INFO SHEET