



SEXUAL HEALTH CLINIC  
CENTER FOR LGBTQ HEALTH EQUITY



DENTISTRY

POWER PROJECT

# The JOURNEY of Care



PHARMACY

SPECIAL EVENTS  
OB AND GYN



DIABETES MANAGEMENT PROGRAM



PEDIATRIC CARE



BEHAVIORAL HEALTH  
THE IMPACT OF VOLUNTEERING



THE EVERY MEAL MATTERS PROGRAM



Chase Brexton Health Care  
2024 Annual Report

DEPARTMENT OF MISSION ADVANCEMENT AND STRATEGIC PARTNERSHIPS

## OUR MISSION

To provide compassionate and integrated high quality health care that honors diversity, addresses health inequities, and advances wellness in the communities we serve.

## OUR VISION

To be a health equity leader in our communities, recognized for excellence in patient care and a culture of teamwork that supports individuals to achieve their full potential.

## OUR VALUES

We are committed to being trustworthy and reliable and to authentically living our values.

### RESPECT

We are committed to respecting each other and to value unique qualities, diverse backgrounds, and perspectives.

### COMPASSION

We are committed to helping our patients, their families, and each other with kindness and understanding.

### PATIENT-FOCUSED CARE

We are committed to partnering with our patients and communities to improve their health and well-being.

### INNOVATION

We are committed to adopting technology to remove barriers to care and continuously improve the patient and staff experience.

## DEAR SUPPORTERS, PARTNERS, AND DONORS,

Our life journeys are personal and distinctive. Yet, we rarely go through them alone. If we are lucky, we find a community to join us, help us, and support us.

At Chase Brexton, implicit in our mission and vision is the goal to be that community to our patients. A community health center is a unique entity serving as a safety-net provider for those who may otherwise be unable to access care. However, it is our intention to not simply serve in cases of need, but to be a community of care for the many lives we touch. And we are tremendously proud of the growth we've achieved this year, which has enhanced our ability to both guide and follow our patients on their journeys.

Through this Annual Report, you'll go on an interactive tour of our programs that impact our patients' lives for the better. We will give you a closer look at our mission in action through the workings of our integrated and innovative programs, and you'll hear the life-changing effect of these programs directly from our patients.

### Honors Diversity

We are particularly proud of our residency programs and our Center for LGBTQ Health Equity's hard work to train nearly 2,000 professionals, both of which serve to expand quality, compassionate care beyond our doors. National LGBT Elders Day, founded by Chase Brexton, has become a global celebration and this year's Chase Brexton event engaged more than 150 patients and community members. And our monthly free "lunch and learns" provide education and discussions, while also providing community and socialization.

### Addresses Health Inequities

From our attendance at more than 100 outreach events to our Every Meal Matters food security program which provided recipes, education, and more than 90,000 pounds of food to our patients, our commitment to expanding access to care goes beyond medical care and into the everyday lives of those in the communities around us. Among our most impactful efforts, Chase Brexton expanded our former Randallstown Center to the Security Square Mall in Woodlawn, MD, nearly doubling capacity and access to care.

### Advances Wellness

As an expansion of our free HIV testing, our new Sexual Health Clinic provides free walk-in STI testing and personal care items to those in our communities. Our intensive diabetes management program brings together clinicians, pharmacists, and nutritionists to support those with uncontrolled diabetes, providing them with tools that enable them to take control of their health and drastically lower their A1C to healthier levels. Addressing the need for earlier prenatal care and ensuring postpartum care is accessed, our OB and GYN teams developed an innovative program that provides patients who achieve their care goals with items to support them and their new baby.

### A Community of Care

Often, our patients are surprised by how much they deserve and will receive from our community. And, as a supporter, partner, or donor, you are an invaluable part of this community. We are grateful for your dedication, compassion, and continued support of Chase Brexton. Thank you for continuing to share in our mission and being a part of our great community of care.

Yours with hopes for good health,

Patrick Mutch  
President & CEO, Chase Brexton Health Care

Kaye Gooch  
Chair, Chase Brexton Board of Directors

*"We don't heal in isolation, but in community."*

– S. Kelley Harrell



PATRICK MUTCH  
PRESIDENT & CEO



KAYE GOOCH  
BOARD CHAIR

# THE DIABETES MANAGEMENT PROGRAM: MAKING THE DIFFERENCE

For many of our patients, diabetes can be hard to manage. From the daily stressors of life to not knowing where to start, a diabetes diagnosis can be devastating.

Enter the Chase Brexton Health Care Diabetes Management Program. Through this program, participants learn about healthy eating with nutrition counseling, meet with pharmacy specialists to establish daily care regimens, and consistently check in with caring diabetes providers who are experts in the field.

## By the Numbers

In 2024, over 900 patients were enrolled in the Diabetes Management Program logging around 10,000 total visits. Among these patients, 87% received pharmacotherapy management and 93% received diabetes self-management education. Participants in the program saw an average A1C decrease of 1.2 points this year.

## A Conversation with Clinical Director of Diabetes and Nutrition Services, Dr. Sarah Connor, DO

### How does the Diabetes Management Program impact the community?

Patients have increased access to diabetes care and can rely on us for in-depth management and monitoring of their diabetes. Patients also have access to healthy food options at the food pantry which can foster positive dietary modifications and a healthy lifestyle. Clinically, the patient has the opportunity to directly work with the clinical pharmacy specialist and nutritionist to improve their glycemic control which will reduce their future risk of morbidity, mortality, and hospitalization and increase their quality of life.

### How does the Diabetes Management Program work with other service lines?

The pharmacists accept diabetes management referrals from the primary care team to provide direct pharmacological diabetes management; any prescriptions written can be filled at the on-site pharmacy. Nutritionists support pharmacists by providing education on nutrition and lifestyle modifications and patients can access diabetes-friendly food options at the food pantry. Social workers are also available to assist patients with medication costs as well as access/transportation to their appointments.

### What would you like to see for the future of the Diabetes Management Program?

We would like to see the continued growth of patients enrolled in the program and additional opportunities for patients to receive education on proper administration of injectable medications, blood sugar testing, and continuous glucose monitoring.



Diabetes Management Patient, Andr'a (left)



Hear from diabetes patient, Andr'a, in this heartfelt video message.



See what a day in the life of a Chase Brexton diabetes patient is like in this walk-through video.



Sexual Health Clinic team

# THE SEXUAL HEALTH CLINIC: NEW IN 2024

Opening in 2024, the Chase Brexton Sexual Health Clinic has already made an incredible impact on the Baltimore community. This unique program, housed at our Mount Vernon location, welcomes established Chase Brexton patients as well as non-affiliated community members. The clinic provides sexual health care including testing, treatment, HIV/STI biomedical prevention and birth control starts, through an innovative, sex-positive, harm-reductionist, nurse-led model. Shanna Dell, Sexual Health Services Program Manager says, "Clients appreciate the easy access point to sexual health services, and many of our community patients express interest in engaging in primary care at Chase Brexton after a visit to our clinic."

## By the Numbers [1/1/24-12/31/24]

  
We saw 1,358 Sexual Health Clinic clients with 1,816 visits

  
47% were not affiliated with Chase Brexton previously

  
186 people were started on PrEP

  
308 cases were identified (chlamydia, gonorrhea, syphilis, or HIV)



Take a virtual tour of our new Sexual Health Clinic now.

# EVERY MEAL MATTERS FOOD PANTRIES: THE KEY TO GOOD HEALTH

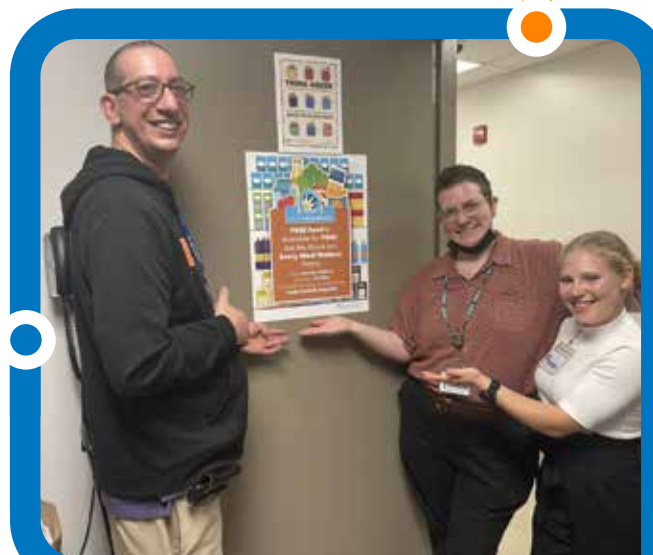
Having access to healthy ingredients can be the key to unlocking positive health outcomes and managing chronic conditions, such as diabetes. Located at our Mount Vernon, Columbia, and Security Square centers, Every Meal Matters food pantries allow patients the food security needed to thrive. With support from a multidisciplinary team of Chase Brexton staff, patients are greeted with a friendly face who is available to answer questions and provide recipe cards that include ingredients found in the pantry.

Chase Brexton Registered Dietitian, Nicole Mason, MS, RD, LDN comments, "The Every Meal Matters food pantries provide patients and families with a convenient way to access complete and balanced nutrition that they may not always easily afford or have access to. With rising consumer prices, we hope to continue to provide food, supplies, and meal resources that are not only healthy, but are also tasty."

## 2024 By the Numbers

Chase Brexton Center	Pounds of Food Distributed	Patients Served
Mount Vernon	63,281	4,219
Columbia	22,062	1,470
Security Square	14,304	954
<b>Total</b>	<b>99,647</b>	<b>6,643</b>

Every Meal Matters pantry staff



Patients, Elisabeth (left) and Jayne (right)



In this heartfelt video, mother-daughter duo Elisabeth and Jayne share their experience with the Every Meal Matters Food Pantry.



## DENTAL: MEETING THE NEED

Officially established in 2000, the Dental Department at Chase Brexton has seen tremendous growth in a short time. Under the leadership of Dental Director, Brooks Woodward, DDS, Chase Brexton dental clinics expanded from two dental rooms at one location in 2001 to a robust program across four centers (Mount Vernon, Security Square, Glen Burnie, Columbia) with eight dentists, seven dental hygienists, and four dental residents.

Today, the Chase Brexton dental program is one of the largest dental providers in the State of Maryland for medical assistance that also offers sliding fee scale services for patients (adult and pediatric) who are uninsured. To meet the great need for dental care in our communities, the dental team has provided care through multiple community programs including school sealants and HeadStart. Throughout 2024, there have been 20,249 dental visits with 7% of visits being with new patients.

Dr. Woodward reflects, "Dentistry at Chase Brexton is impactful to our communities because we offer general dentistry services at four centralized locations in the State making access to care more available. We also have grant funds to supplement both adults and children to cover the costs of dental care if they cannot afford it, allowing our communities to receive dental treatment when they would otherwise have gone untreated. We are continually looking for expansion opportunities both in location and dental staffing in order to meet the growing need for access to dental care."



Afraid of the dentist? Unsure about dental X-rays? No worries! Watch our "Day in the Life of a Dental Patient" video to put your mind at ease.

# PHARMACY: DELIVERING PEACE OF MIND



Mount Vernon Center pharmacy staff

At Chase Brexton Health Care, we understand the stress of managing multiple locations, appointments, and transportation when taking care of your health. Having full-service pharmacies onsite, as well as delivery services, not only saves patients' time... they improve medication adherence and competence. Chase Brexton's expert pharmacy teams ensure all questions are answered and that health care needs are being met.

Chief Pharmacy and Strategy Officer, Mahro Ershadi, MBA, PharmD reflects, "Through accessible, compassionate care, our pharmacies make a profound impact on communities, promoting health and wellness for all. As an essential bridge within our health centers, our pharmacists collaborate seamlessly with other service lines to deliver comprehensive, patient-centered care. We envision a future where our pharmacies continue to innovate, expand services, and deepen their role in addressing the evolving health care needs of our communities."



Ever wonder what happens behind the scenes at a pharmacy? Nervous about visiting a Chase Brexton pharmacy for the first time? Check out this short video to have all your pharmacy-related questions answered!

*"We envision a future where our pharmacies continue to innovate, expand services, and deepen their role in addressing the evolving health care needs of our communities."*

-Chief Pharmacy and Strategy Officer, Mahro Ershadi, MBA, PharmD



## OB AND GYN: FOR ALL AGES AND STAGES

At Chase Brexton, our caring OB and GYN teams are made up of clinicians and certified nurse-midwives that are LGBTQ affirming, dedicated to compassionate high-quality care, and knowledgeable about treating across the lifespan.

Adult and adolescent gynecology services include preventive care, pregnancy and infertility counseling, and menopause care. OB services are robust and ever-expanding with prenatal and postpartum care including breastfeeding consultations after delivery. In 2024, there have been 15,754 OB and GYN patients seen and 326 deliveries!

Chase Brexton Director of Reproductive Health, Yael Eskinazi comments, "Our OB and GYN department is growing as we work to provide high-quality prenatal and GYN care to our communities! We have seven providers who rotate through four clinic sites, including our Columbia location to which we expanded in early 2023. We continue to nurture our partnerships with our surrounding institutions, University of Maryland Medical System and Johns Hopkins, and have created pathways for our under and uninsured patients to access much needed specialty care."

### NEW in 2024: My Healthy Pregnancy

Starting this year, My Healthy Pregnancy is a fun incentive program designed to support pregnant patients in their prenatal and postpartum appointment adherence. Through participation in the program, patients earn gifts including essential items like diapers, clothes, breast pumps, pack-n-plays, etc. This program is all about ensuring patients and their babies have the support and resources they need.



Scan the code to learn how to get involved with the My Healthy Pregnancy program now.

# BEHAVIORAL HEALTH: EXPANDING ACCESS TO SUBSTANCE USE TREATMENT

Emotional and psychological support is integral to truly taking care of the whole person. That is why we offer Behavioral Health Services at each of our five locations, with both virtual and in-person options. In addition to licensed social workers and counselors, our psychiatry program helps our patients with medication management and coping with a variety of conditions.

## By the Numbers

[1/1/24-11/1/24]

Chase Brexton Center	Behavioral Health Patients (Including Substance Use Treatment)	Total Visits
Glen Burnie	771	5,237
Mount Vernon	2,594	19,278
Columbia	952	6,967
Security Square	1,107	5,603
Easton	149	909
<b>All Centers</b>	<b>5,573</b>	<b>37,994</b>

Lisa Pearson, Vice President of Behavioral Health says, "The Behavioral Health Department at Chase Brexton is excited to serve our community. Our emotional, mental, and behavioral well-being is connected to our physical well-being. We are developing services that are responsive to community need, timely, and delivered by compassionate life-long learners in therapy. We are appreciative of the interdisciplinary staff, expertise, and support at Chase Brexton. We do this work alongside our colleagues with courage, compassion, and commitment to structural change."

We are excited to announce that our Substance Use Treatment Program will be expanding thanks to a grant from Maryland's Office of Overdose Response. In collaboration with community partners, Chase Brexton's Certified Peer Recovery Specialist Team will facilitate community-based events offering Narcan training, overdose prevention packages, harm reduction services, and referrals to on-site services, including substance use disorder treatment and primary medical care.



Chase Brexton's Behavioral Health team at a community event



See the impact of our Peer Recovery Specialist Team by reading "Delise's Story" now.



The 2024 ElderPride Council

## CENTER FOR LGBTQ HEALTH EQUITY: ELDERPRIDE

The Center for LGBTQ Health Equity at Chase Brexton was built on the foundation and legacy of the LGBTQ elders who started it all.

So often, older adults are left out of the conversation, leading to isolation, knowledge gaps, and reduced quality of life, especially for LGBTQ elders. Enter ElderPride, a program from The Center for LGBTQ Health Equity that offers accessible education, resources, and socialization events for LGBTQ elders and their informal caregiving networks. The program also provides an entry point for people to access support groups, primary care, and all other service lines at Chase Brexton.

### National Honor Our LGBT Elders Day

Nine years ago, National Honor Our LGBT Elders Day was started right here at Chase Brexton. Every May 16 people from around the country (and world!) spend this special day celebrating and acknowledging our incredible LGBTQ elders. In 2024, National Honor Our LGBT Elders Day reached over 1.1 million people across social media platforms!

Here in Maryland, we gathered at the Baltimore Symphony Orchestra for a night filled with community and storytelling. Sam McClure, Executive Director of The Center for LGBTQ Health Equity comments, "This national commemorative day lets us focus on the incredible contributions of our older LGBTQ community members. The history of the equality movement was forged and lived by this very group of people. Even the founding of Chase Brexton was in the hands of these elders. We hold them in our highest esteem and serve them with love and pride."

Join us on May 16, 2025 at the Baltimore Symphony Orchestra as we celebrate 10 years of National Honor Our LGBT Elders Day!



Watch now to revisit National Honor Our LGBT Elders Day 2024, featuring a heartfelt tribute to the memory of Elder Carlton Smith.

## POWER PROJECT: IN THE COMMUNITY

The POWER (Protecting Ourselves With Every Resource) Project is made up of highly compassionate, sex-positive, HIV experts that focus on testing and prevention. You will find POWER onsite at Chase Brexton centers testing for HIV, educating about prevention options, and distributing safer sex kits.

POWER also collaborates with internal and external partners, including the Baltimore City Health Department, Johns Hopkins Medicine, and other community-based organizations to address the needs of our patients. In the community, POWER staff attend a variety of engagement events with the testing and medical van, bringing care directly to where it is needed.

Tonya Williamson, C.C.H.W., Program Manager, Social Work and Outreach says, "Over the last year, POWER has provided intentional outreach, testing, and linkage to services in the community. As a result, we have become a trusted partner in addressing social determinants of health in a multi-layer approach which includes access to testing and services, same-day HIV care, and follow up. For the future, POWER Project will continue to identify and meet the community's unmet needs by being innovative and leaders in this industry."



Learn more about the POWER Project and PrEP in this World AIDS Day video featuring Chase Brexton's PrEP Coordinator, James L Burrell Jr.

 **POWER Project team**  
at a community event

*"Over the last year, POWER has provided intentional outreach, testing, and linkage to services in the community. As a result, we have become a trusted partner in addressing social determinants of health in a multi-layer approach which includes access to testing and services, same-day HIV care, and follow up."*

-Tonya Williamson, C.C.H.W., Program Manager, Social Work and Outreach

## THE DEPARTMENT OF MISSION ADVANCEMENT AND STRATEGIC PARTNERSHIPS A YEAR IN REVIEW

As has been the case since its inception, the work of the Department of Mission Advancement and Strategic Partnerships continues to be informed by listening to and championing the communities we serve. This past year has been transformative in addressing barriers to care, instituting org-wide professional development, promoting training centered on staff well-being, fostering additional community partnerships, and facilitating a culture of tolerance, reflection, and growth.

### Reflecting on 2024, the Department of Mission Advancement and Strategic Partnerships:

1. Partnered with Cool & Associates LLC to finalize the development of a Spanish-Speaking Patient Engagement Guide. This valuable resource will aid in fostering compassionate and equitable care.
2. Delivered an impactful presentation for the Mid-Atlantic Society for Healthcare Strategy and Market Development (MASHSMD) Annual Conference.
3. Delivered an engaging presentation entitled: "Cultivating Company Culture: The Power of Marketing to Fuel Belonging in the Workplace," for Kennedy Krieger Institute's Neurodiversity in the Workplace National Conference. During the conference Chase Brexton received an award for Excellence in Neurodiversity for our dedication to advancing neurodiversity and creating inclusive environments.
4. Hosted an in-person training focused on burnout, stress, and the management of the two at Security Square Center, Mount Vernon Center, and Columbia Center.
5. Hosted a virtual training for patient-facing staff centered on social and cultural barriers and increasing trust and belonging among patients.
6. Instituted a comprehensive online training for staff which focuses on intent versus impact and biases with incorporated scenario work and educational resources.
7. Facilitated a renewed partnership with Baltimore Center Stage (BCS). This partnership includes a curated promo code for all shows and pre-show Community Nights where tabling partners promote their respective organizations and connect with fellow community members.
8. Provided subject matter expertise in clarifying roles and workflow processes for staff certified to aid patients with Limited English Proficiency (LEP).
9. Continued hosting the quarterly Staff Book Club as an employee resource group event.
10. Launched a year-long Awareness Campaign recognizing various historical and cultural observances, encouraging employee engagement.



*Sharing the work of the Department of Mission Advancement and Strategic Partnerships at Baltimore Center Stage community nights*

Embarking on 2025, we aim to further enact positive, impactful change through customer service initiatives and prescribed trainings taken from the pages of our Spanish-Speaking Patient Engagement Guide. As this work is collaborative in nature, we remain grateful to our colleagues for their shared commitment and resourcefulness as we strive to further develop a culture that is reflected in our conduct, policies, and patient and staff experiences.



Security Square Center grand opening

## SECURITY SQUARE CENTER: A BEACON OF HOPE

For over 25 years, Chase Brexton Health Care has been serving the Randallstown/Woodlawn area of Baltimore County as one of only three Federally Qualified Health Centers in the region. In March of 2024, our commitment to this area deepened with the opening of the state-of-the-art Security Square Center.

This brand-new health home not only doubles the size of our previous Randallstown location, it also provides room for growth across all service lines and the ability to care for thousands of additional patients each year.

Percy M. Jones, Director of Operations at Security Square Center comments, "The opening of the Security Square Center represents a transformative milestone in the West Baltimore County community. Offering essential resources that improve quality access to health care and contributing to the well-being of our patients by creating a space where all patients feel valued and supported. The future is bright for our location with budding partnerships with the local health department and community organizations. Chase Brexton Security Square Center will be noted as one of the beacons of hope and light for this community."

Through affirming primary care, dental, behavioral health, pharmacy, and laboratory, Security Square Center will provide more services and access to care for you, your family, and your community!



Take a video tour of Chase Brexton's brand-new Security Square Center now.

*"The opening of the Security Square Center represents a transformative milestone in the West Baltimore County community. Offering essential resources that improve quality access to health care and contributing to the well-being of our patients by creating a space where all patients feel valued and supported."*

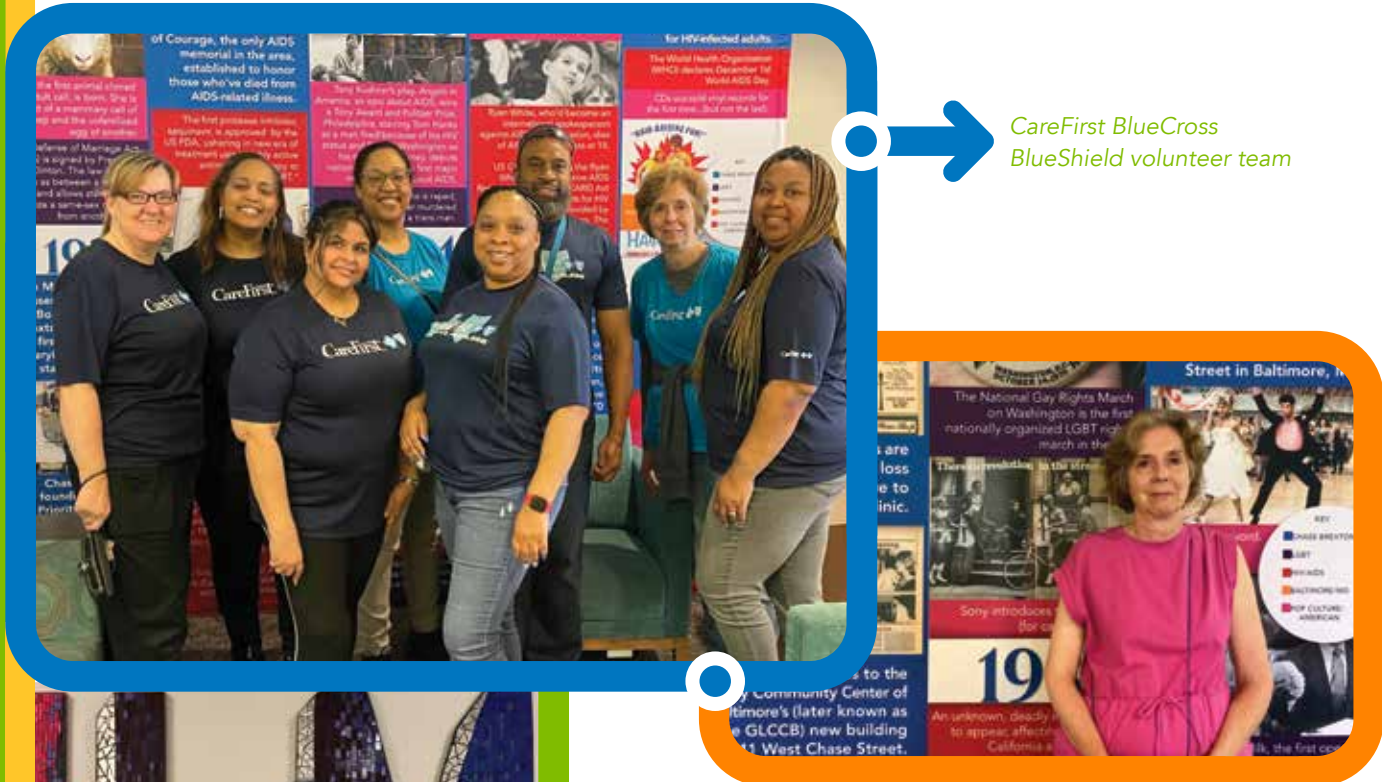
-Percy M. Jones, Director of Operations at Security Square Center

## VOLUNTEERS: AN OPPORTUNITY FOR YOU!

At Chase Brexton, volunteers are busy behind the scenes, assisting with everything from turkey giveaways over the holidays to serving elders at National Honor Our LGBT Elders Day to keeping morale high throughout the Baltimore Running Festival.

Volunteering with Chase Brexton is a fun and flexible opportunity. Need to log a few service hours? Help at a special event! Looking for a weekly commitment with your company for employee engagement? Unbox food deliveries in our Every Meal Matters food pantries! Whatever you are looking for, we have a spot for you!

Check out the videos below to see the importance and impact of volunteering at Chase Brexton! To get involved, contact Lauren McGee, Development and Special Events Manager at [lmcgee@chasebrexton.org](mailto:lmcgee@chasebrexton.org).



CareFirst BlueCross BlueShield volunteer team

Listen to CareFirst BlueCross BlueShield's Maire McCarthy Bollard share her experience volunteering with Every Meal Matters food pantries.



Discover why volunteering at Chase Brexton's special events matters to Morgan Stanley's Joe Fink.





## DEVELOPMENT: MAKING IT ALL POSSIBLE

The Chase Brexton Development Team plays a unique and key role in our ability to grow, innovate, and ultimately deliver on our commitment to compassionate and quality health care. Many of our most successful programs were initially started with support through funds raised by Development. For instance, the Diabetes Management Program began with a grant from Quest Diagnostics before becoming a sustained service line through the mechanisms that exist within the Federally Qualified Health Care system. Additionally, programs such as the Every Meal Matters food pantries would not have been possible without donors who provided the seed funding necessary to get them started.

Director of Development, Alexa Milanytch says, "When we receive funding from an individual, corporation, or foundation, it fills a gap in our communities. Further, every undesignated dollar donated is earmarked for the Hope Lives Here fund. In short, 100% of your donation supports people in need."

What is the Hope Lives Here Fund? This unique program is used by our Social Work and Outreach Department to enable our patients to live their healthiest lives through emergency assistance with medication copays, dental costs, grocery cards, eviction prevention, and utility preservation. It is a safety net, a bridge to care, and a lifeline that makes all the difference.



Scan here to make your donation to Chase Brexton today!



Silver Sponsor Brown Advisory Gala Attendees

## THE CHASE SOCIETY

The Chase Society of Chase Brexton Health Care was established to recognize the generous contributions individuals or family foundations have made over their lifetime. It also includes our Corporate Recognition Program, which recognizes Gold, Silver, and Bronze corporate donors who likewise have shown an ongoing commitment to Chase Brexton's mission.

### 2024 SUPPORTERS

#### GOLD

*\$500,000 or Greater Over a Lifetime*

Associated Black Charities  
 Gilead Sciences  
 Harry and Jeanette Weinberg Foundation  
 Maryland Community Health System

#### SILVER

*\$250,000 or Greater Over a Lifetime*

Baltimore City Health Department  
 CareFirst BlueCross BlueShield  
 France-Merrick Foundation, Inc.  
 GE Aviation- Middle River Aircraft Systems  
 Horizon Foundation  
 Kaiser Permanente  
 SAGE (Services and Advocacy for LGBT Elders)

#### BRONZE

*\$100,000 or Greater Over a Lifetime*

Aetna Foundation, Inc.  
 Broadway Cares/Equity Fights AIDS  
 GlaxoSmithKline  
 Johns Hopkins Medicine  
 Kenneth S. Batty Charitable Trust  
 Eric Lancaster  
 M&T Charitable Foundation  
 Middendorf Foundation  
 PNC Charitable Trusts  
 Quest Diagnostics  
 Siemens  
 The Rouse Company Foundation

#### RUBY

*\$50,000 or Greater Over a Lifetime*

Karen Bellesky  
 Barbar Kane

#### SAPPHIRE

*\$10,000 or Greater Over a Lifetime*

Jacqueline Adams	David Hankey	Neha Pandit
Samuel Ady	Payam Hariri	Ron Pelzer
Don Alexander	Roberta Heath	Les Pitton
Kenneth Bryan	Kristine Holmes	Kimberly Price
Bruce Caviness	Roderic Hooks	David Reed
Betsy & Susan Cerulo-Murray	Jeffery Jensen	Ken Ruby
William Charmak	Carolyn Kennedy-Piggott	Judy Shahan
John Chrisman	Frederick Koontz	David Shippee
Jesse Craig	Joanne & Edward Kraus	Alice Sliwka
Roger Dalsheimer	Richard Larison	James Spellissy
Mary Ann Facente	George Lavdas	Ronald Taylor
John Farley	Jennifer Mayhew	Patricia Thomson
Andy Frake	Merle McCann	Guy Van Tiggelen
Paul Fowler, M.D.	David McKibbin	Christine Wallace
Franklin N. McNeil	Patrick Mutch	Karen Weiss
Susan Friedlander	Charles O'Connell	
Ronald Griffin	Joe O'Neill	
	Yvette Oquendo-Berruz	

#### EMERALD

*\$5,000 or Greater Over a Lifetime*

Harry Alascio	Eliza Guion	Shanae Murray
J. Bonds	C. David Haltiwanger	Damian O'Doherty
Phillip Bovender	Brian Hannon	Gerri O'Donoghue
Jack Boyson	James Hart	Christopher Panos
Davis Bradley	Eva Hersh	Brian Pieninck
Carol Brochin	Robert Hoehn	Elyse Pine
William Budacz	Ann Holmes	Terry Pritt
Jon Carneiro	Lisa Jones	Johna Ruffo
Richard Caserta	Evelyn Kalanick	Philip Saracino
George Chambers	Denise Karas	Donna Schoch-Spana
Thomas Davison	Joyce Keating	Alan Sea
Randy Delker	Jeff Klug	Raymona Smith
Deborah Dunn	Aaron Lorange	Jane Steck
Maddy Feinberg	Sam McClure	Duke Stone
Joseph Ferlise	Dan McEvily	Nate Sweeney
Tommy Flow	Alexa Milanytch	Eric Turnbaugh
Claude Fox	Steven Miller	Lauren Vaszil
Becky Frank	Nancy Miller	Robert White
Sam Fuller	Douglas Miller	
Tracey Gersh	Thomas Moloney-Harmon	

# SPECIAL EVENTS: OUT AND ABOUT

Chase Brexton Health Care is a part of our vibrant communities, attending and hosting events throughout the year across all our service areas. In June and October, you might have seen us marching in the Baltimore Pride and Trans Pride parades, welcoming LGBTQ older adults to the ElderPride tent, and greeting community members at Annapolis, Easton, Upper Chesapeake, and Howard County pride festivals. Perhaps you caught our POWER Project Testing Van at a local community college, wellness event, or resource fair, such as the BMore Healthy Expo or Reisterstown Festival. You may have ran with Team Llamacorn at the Baltimore Running Festival or danced the night away at our Baltimore or Annapolis galas. Wherever you saw us in 2024, we hope you feel proud to be a part of our work, mission, and future.

## RELIVE OUR 2024 SPECIAL EVENTS



### Ritz & Razzmatazz, A Gala for the New Roaring '20s: Baltimore Museum of Art, March 30

As we gathered under the twinkling lights and danced the night away, we increased access to health care for all. Through generous contributions and participation in the event, attendees and sponsors helped raise \$370,000 to support uninsured and under-resourced patients at our brand-new Security Square Center in Baltimore County. What a roaring success!



Discover the legacy of this unforgettable night in "Ritz & Razzmatazz 2024: The Impact" on YouTube.



### Inaugural Annapolis Gala: The Chesapeake Bay Foundation Center, November 3

Our Inaugural Annapolis Gala was a magical evening at the breathtaking Chesapeake Bay Foundation, raising over \$83,000 for The Center for LGBTQ Health Equity. Join us next time on Saturday, November 8, 2025.



View the video from the Inaugural Annapolis Gala.

### The Baltimore Running Festival: October 19

With nearly 80 people joining Team Llamacorn at the Baltimore Running Festival, we raised over \$20,000 to support our patients and communities—all while having a blast and meeting personal goals.



Check out the photos from our incredible time at the Baltimore Running Festival with Team Llamacorn on Chase Brexton Health Care's Facebook page.



# 2024 SPONSORS

## ANNAPOLIS INAUGURAL GALA

SILVER



BRONZE



Carolyn Kammeier

Charlie O'Connell



Jamie Merida & Vincent Bochin of Bountiful Home



## BALTIMORE GALA

2024 DIAMOND PARTNER



ALL THAT JAZZ



BEE'S KNEES



SPEAKEASY



BOOTLEGGERS



ART DECO

- AffirmCare for LifeBridge Health
- BD Diagnostic Solutions
- Arris Design
- Priority Partners
- Ascension Saint Agnes Healthcare
- Renaye James Healthcare Advisors

THE CHARLESTON

- AdNet
- Athena Health
- Cushman & Wakefield
- Ironmark
- Kelly Benefits
- Mercy Health Foundation
- PSA Insurance & Financial Services
- T.Rowe Price
- Venable

MEDIA SPONSORS



## BALTIMORE RUNNING FESTIVAL

RUN SPONSOR



JOG SPONSOR



WALK SPONSOR



# WHO WE SERVE (7/1/23-6/30/24)

## TOTAL PATIENT VISITS BY SERVICE



Medicine/OB and GYN  
106,503



Behavioral Health  
31,717



Social Work & Outreach  
15,577



Dental  
13,259



Substance Use  
1,703

## LGBTQ PATIENTS\*

By Sexual Orientation



Lesbian/Gay: 3,178



Bisexual: 2,206



Other/Self-Described: 715

Identify as Gender Diverse by Age

*\*These numbers are based on patient self-reporting*

0-20 Years Old: 1,101

21+ Years Old: 3,091

## PAYOR MIX

Medicaid:  
13,912

Uninsured:  
17,870

Medicare:  
2,696

Private Insurance:  
9,947

**PATIENTS WE SERVE WHO DO NOT HAVE INSURANCE**

**17,870**

## RACE & ETHNICITY

Non-disclosed: 435

Non-Hispanic or Latino:  
28,257

Hispanic or Latino:  
14,890

Black/African American:  
18,545

American Indian/Alaskan Native:  
900

More Than One Race:  
350

White:  
15,657

Asian/Native Hawaiian:  
1,732

**Total Number of Patients:  
43,582**

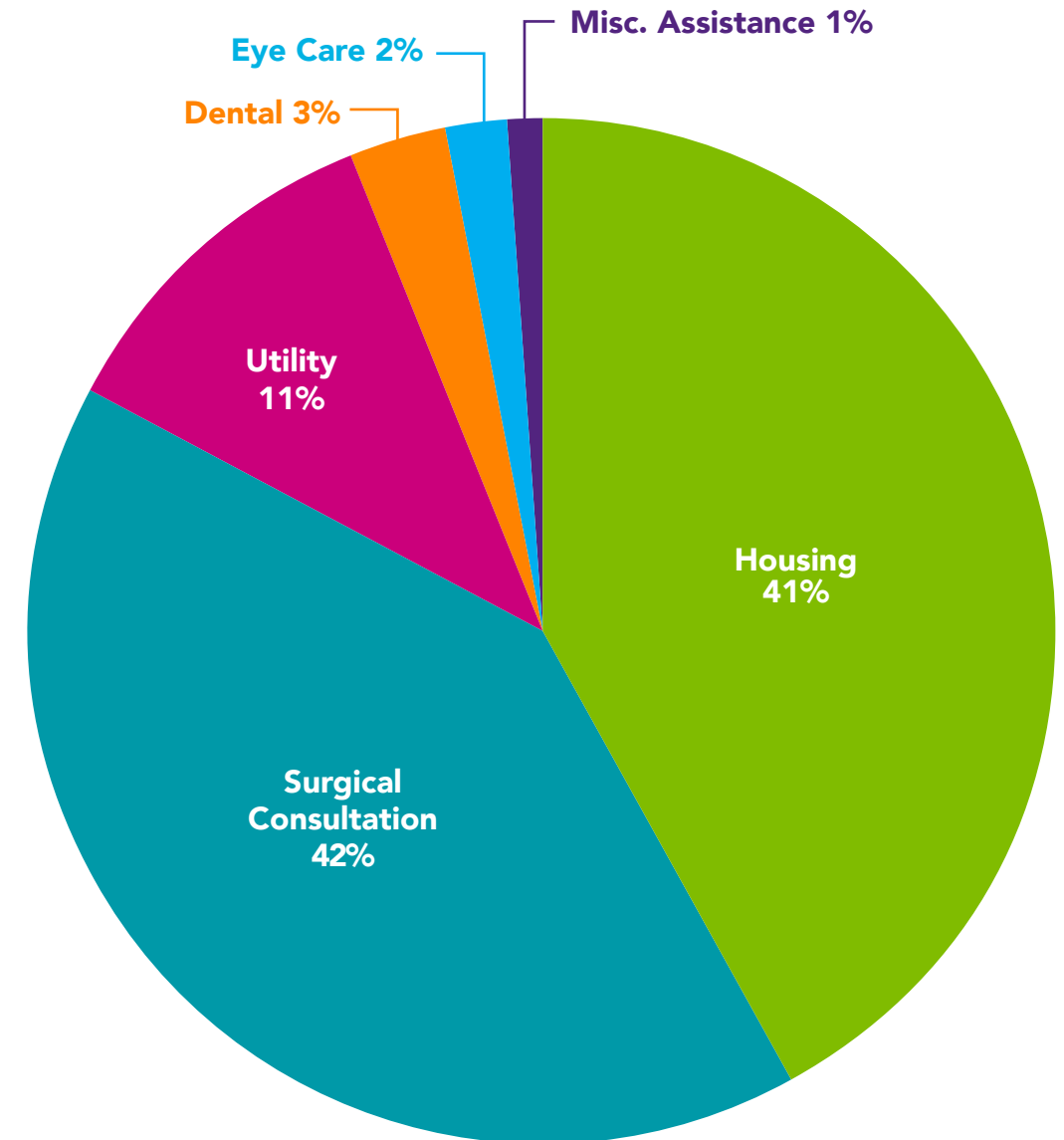
CARE WITHOUT COMPENSATION FY2024

**\$13,075,746.19**



## HOPE LIVES HERE

Chase Brexton's Hope Lives Here Fund helps our most vulnerable patients receive much-needed health care and support services. Here is how funds were used in FY2024:



**\$86,644**

Hope Lives Here FY24

## LEGACY SOCIETY

The Legacy Society recognizes and honors those who have created a planned or deferred gift for Chase Brexton Health Care to ensure a better future with access to health care for all.

Anonymous	Alan Povey
John Chrisman	Ronald Taylor
Tommy Flow	James Zabora
Kenneth L. Harper	The Sugarman Family

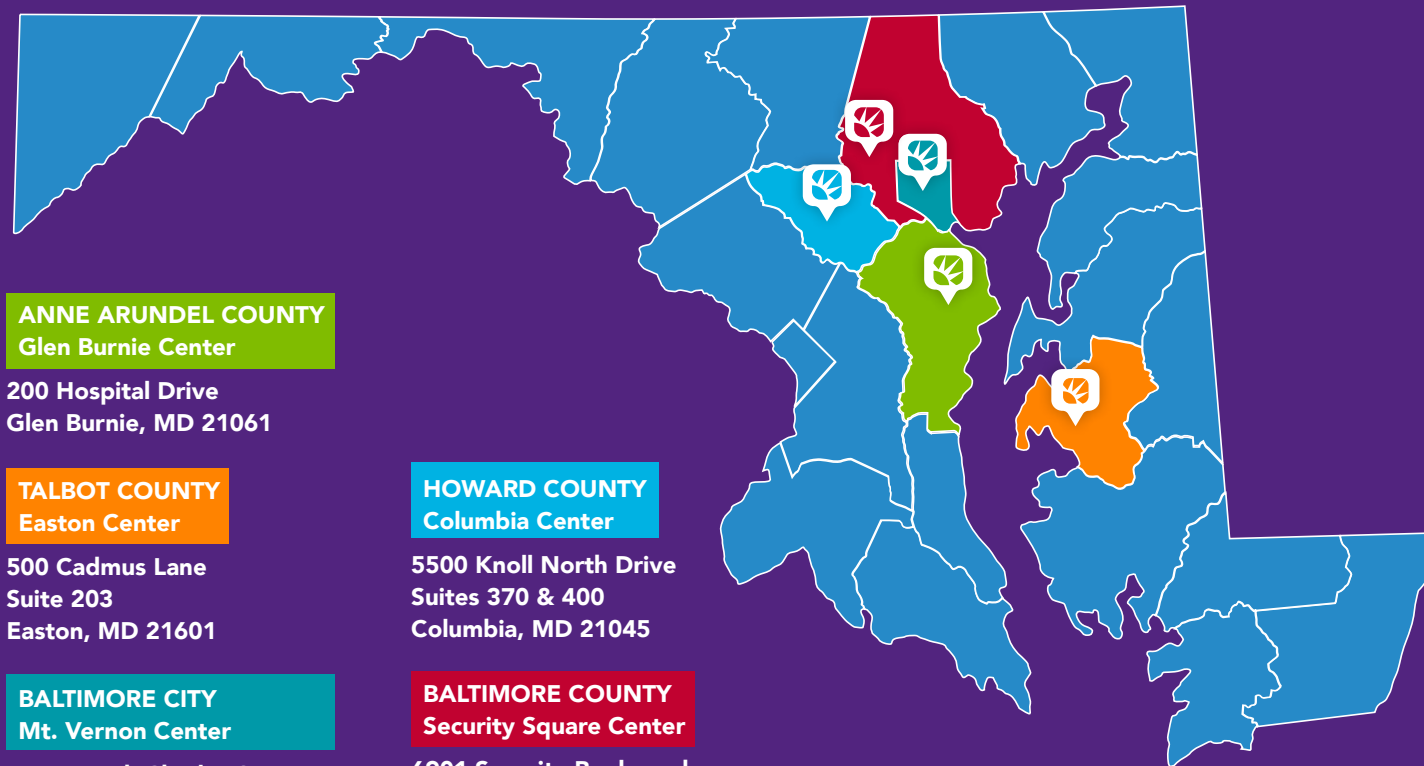


## THANK YOU TO ALL OUR DONORS

Every gift makes our communities stronger. Scan the QR code to view the complete list of our 2024 donors.



## LOCATIONS



### ANNE ARUNDEL COUNTY Glen Burnie Center

200 Hospital Drive  
Glen Burnie, MD 21061

### TALBOT COUNTY Easton Center

500 Cadmus Lane  
Suite 203  
Easton, MD 21601

### BALTIMORE CITY Mt. Vernon Center

1111 North Charles Street  
Baltimore, MD 21201

### HOWARD COUNTY Columbia Center

5500 Knoll North Drive  
Suites 370 & 400  
Columbia, MD 21045

### BALTIMORE COUNTY Security Square Center

6901 Security Boulevard  
Suite 200  
Baltimore, MD 21244

Chase Brexton Health Care is also the provider of primary care services at Sheppard Pratt's Way Station.

## TOTAL PATIENTS

by Center

**SECURITY SQUARE CENTER**  
*(previously Randallstown)*

  
**7,969**

**MT. VERNON**

  
**15,361**

**COLUMBIA + WAY STATION**

  
**13,069**

**GLEN BURNIE**

  
**9,625**

**EASTON**

  
**799**

## BOARD OF DIRECTORS

Kaye Gooch | **Chair**  
Sanjeev Dev | **Vice Chair**  
Rahul Gor, DPM | **Treasurer**  
Julia Krieger | **Secretary**

### General Membership

Lois Anderson  
F.T. Burden  
Shawnte Craig  
Damian D. Crawford, MD  
Miller B. Douglas  
Oscar Franklin  
Keshav Khanijow, MD  
Natasha Mehu  
Juan Negrin  
Alaysia Phillips



**CODA\***



**Chase Brexton Health Care**

1111 North Charles Street, Baltimore, MD 21201 | 410-837-2050 | [chasebrexton.org](http://chasebrexton.org)